



REGIONE AUTONOMA FRIULI VENEZIA GIULIA
PROVINCIA DI GORIZIA
COMUNE DI SAGRADO

P.R.G.C.
PIANO REGOLATORE GENERALE COMUNALE

Tav. A.03a

STRUTTURA URBANA 1818-1825
Sagrado

Sovrapposizione su catasto attuale

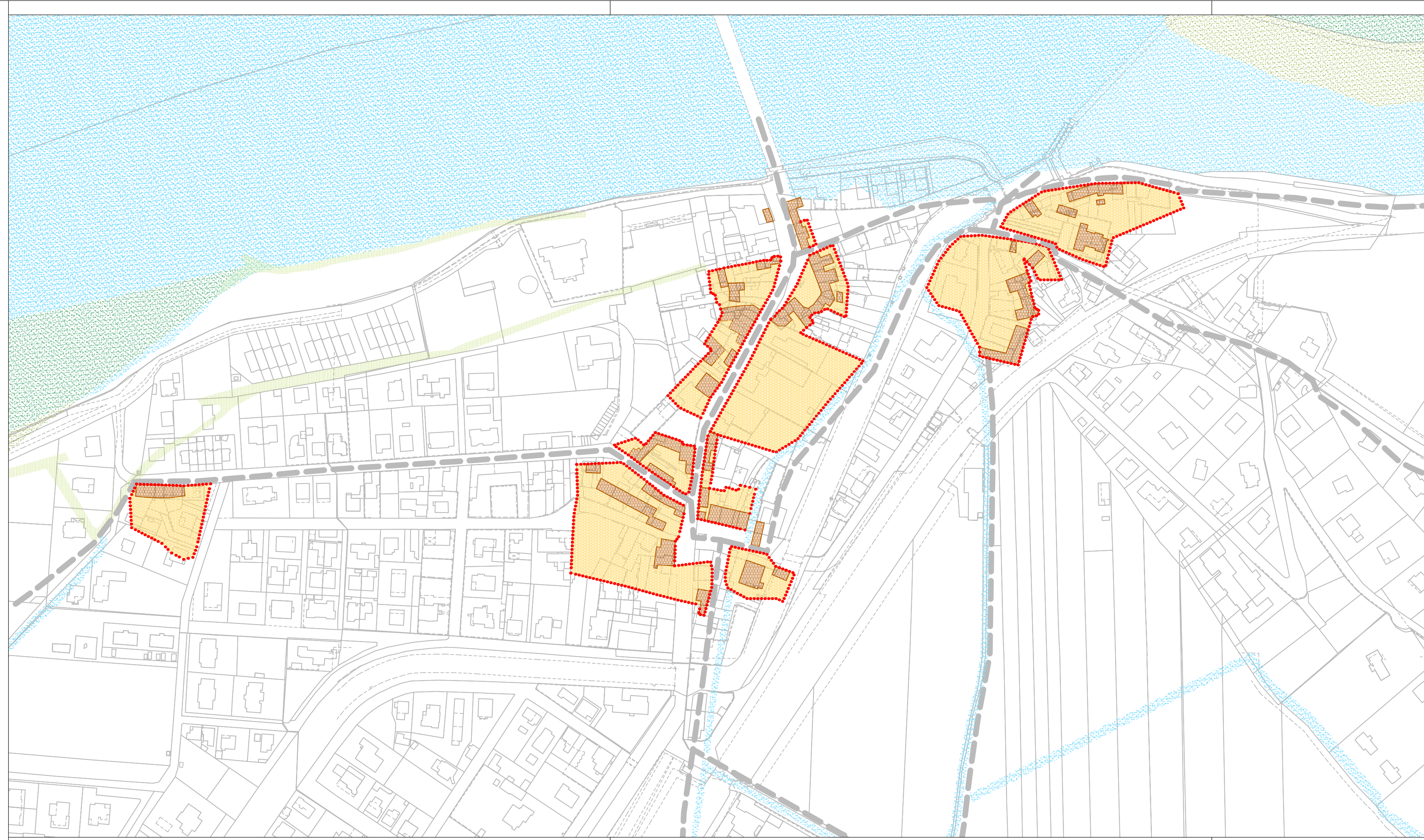
Scala 1:2000

Progettista:
dott. ing. ANTONIO NONINO

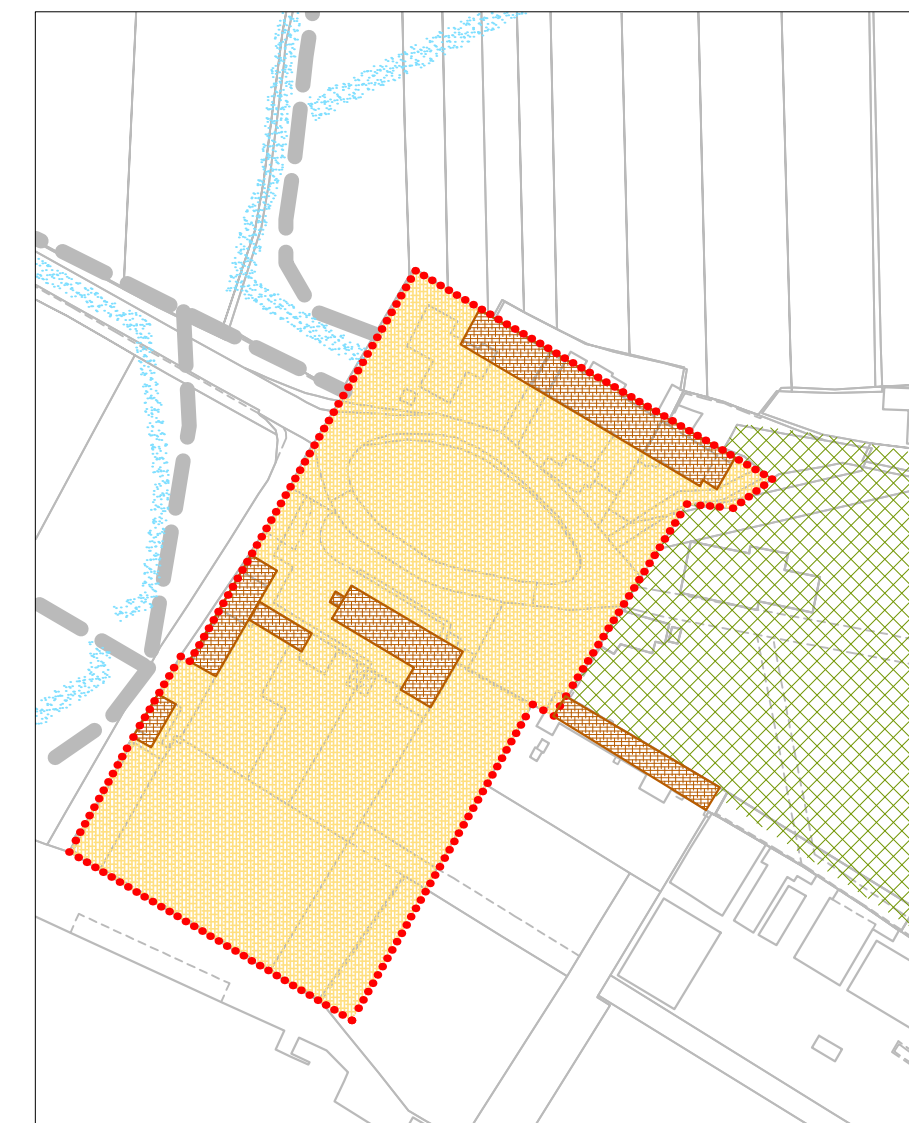
Collaboratori:
geom. IURI PIERO BUNELLO
dott. pian. PATRIZIA DEL ROSSO
dott. arch. VALENTINA CAINERO

Agg.: 18.12.2015

Rev. 4.0

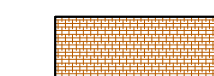
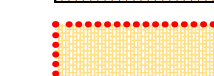
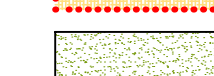






LOCALITA' CASTELVECCHIO



LEGENDA :

STRUTTURA URBANA AL PERIODO NAPOLEONICO (1818-1825)

-  EDIFICI AL 1818-1825
-  AREE PERTINENTI AGLI EDIFICI
-  GIARDINI
-  AREA PARCO CASTELVECCHIO
-  ARGINI
-  CORSI D'ACQUA
-  PERCORSI PRINCIPALI